

POLAR MISCELLANEOUS PARTS



M546 Polar Gearbox Shaft Bolt. This M12 metric bolt fits on the end of the gearbox output shaft on many models of Polar paper cutters. Equal to Polar #224899.



CAL10 Polar Pressure Control Handle
Cast aluminum with number reference scale (010784, 010028). Exact replacement for original plastic handle.



SW Solid Nylon Wedge for pushing on the Polar clamp hydraulic valve plunger. .750" x 1" x 2.438" long with brass insert (8mm thread). (205844)



SNC Nylon Wedge for Polar clamp pedal cam, 20mm x 47mm x 60mm long with 6mm threaded brass inserts for Polar 92 - 155 EMC II, X, XS, XT, S, E, ED. (017085 and 033268).



SWB270 Control Cam Wedge for Polar cutters. Equivalent to Polar #270789. This plastic wedge measures 50mm x 45mm x 12mm thick. The three tapped holes have M6 x 1mm threads.



Polar Blade Back Up Bars
Steel, 15.750" long with a captive central screw. (2 bars per set).

BB115CE with 12mm bolt. (014179 and 207455). For Polar 115 CE, EMC, EMC MON, E, ED, X, XT, 137 S, EMC, E, ED (before serial #6541101), X, XT, 155 E, ED, EMC (before serial #6021101), X, XT, 176 E, ED, X and XT.

BB115EL with 8mm bolt. (207455) For Polar 112 EL & 115 EL.



BB2125 Polar Blade Spacer 045196C (274865C, 201889C, 270239C). Blade back up block kit for Polar cutters. For some of the Polar 115 S, E, ED, X, XT, 137 S, E, ED, X, XT, 155 E, ED, X, XT, 176 E, X and XT cutters.



POLAR LIGHT BULBS & LAMPS
Light bulbs for older cutters and Polar lamps for newer cutters. Would need length of lamps in order to get the correct one.



POLAR CUT STICK RETAINERS

These plastic blocks are 5/8" square by 1.375" long.

CSTL (Left 206225)

CSTR (Right 206224)



CST-66 Polar Cutter Stick Retainer. Equivalent to Polar #280273, 280247 and 444530). This plastic cutting stick retaining block is used to hold the cutting stick in place. Fits Polar 66. Made in USA.



CST-444 Polar Cut Stick Retainer. Equivalent to Polar part #ZA3.444532). These plastic blocks measure 15mm (.563" square x 52mm (2.062") long. They mount on the left side of some Polar X and XT cutters.



CST-437 Polar Cut stick retainer. Equivalent to Polar part #ZA3.437922). These plastic blocks are 15mm (.625") square x 37mm (1.438") long. They mount on the right side of the table on some of the Polar X and XT cutters.



CARBON BRUSHES

CB10 Carbon Brush for Backgauge reversing on Polar Cutters. Equivalent to 210612. This carbon brush is used on the backgauge reversing button on many Polar cutters made after 1968. Measures 4mm square X 15mm long.



CB11 For old Polar EL cutters built before 1968. 8mm x 29mm x 25mm.



CB12 For Polar 71-76 magnetic clutch. Used on 71 ST, 72 CE, 76 EM, 78 E, 78 ES, 78 ED, 78 X and 78 XT cutters. 6.5mm x 10mm x 15mm



M560 Polar Carbon Brush Holder. Equivalent to Polar part #225903. Comes with new carbon brushes. Fits Polar 76 EM cutters after machine serial number 5361175. This also fits all of the Polar 78 E, 78 S, 78 ES, 78 ED, 78 X, 78 XS and 78 XT paper cutters.



K25 Knob for Polar Backgauge hand fine adjustment. Equivalent to Polar part #017457 and 017302. This steel and plastic knob fits under the table on the front of the cutter. Measures 2.750" in diameter. It has two M8 tapped holes. Includes set screws and switch button.



K25A Switch button for Polar Backgauge Handfine Adjustment Knob. Switch button, mounts, in the center of the handfine adjustment knob on the front of many Polar cutters. Equivalent to the original Polar part #017769. It has a 5mm thread.



V Belt Pulley Assembly for Polar CE paper cutters. (010280, 010127). This machined aluminum split pulley is a direct replacement for the original die cast pulley used on the Polar model CE tampered hydraulic pump output shaft. Included is both pulley halves, three steel adjusting shims and three bolts to hold the two halves together. Each shim is .5mm (.020") thick. The pulleys have threaded steel inserts where the two pulley halves bolt together.

SP187 Hub Length 1/2"

SP188 Hub Length 7/8"



SP182 Polar Split Pulley Shim for V belt split pulley for Polar CE paper cutters. (206640, 266641). This laser cut steel shim is used between the adjustable pulleys on the Polar model CE hydraulic pump pulleys. Measures .5mm thick x 3.938" outside diameter.



SP290 V Belt Pulley Assembly for Polar EMC II, E and ED cutters. (231482, 231481 and 017289). This precision machined aluminum split pulley is a direct replacement for the original die cast pulley used on the tampered output shaft on the Polar model EMC II hydraulic pump. Outside diameter measures 7.375". This pulley has been hardcoat anodized to give maximum hardness and wear resistance. Fits the 92 EMC II, E, ED, 115 EMC II, E, ED, 137 EMC II, E, ED, 155 EMCII, E, ED, 176 E and ED models. Included is both pulley halves, three steel adjusting shims (230068 and 240788) and the bolts to hold the two halves together. Each shim is .5mm thick. The hub half includes threaded steel inserts to prevent threads from stripping.



SP202 Polar split pulley shim. For v belt split pulley for Polar EMC cutters. (230068 & 240788). This laser cut steel shim is used between the adjustable split pulley on the Polar EMC hydraulic pump output shafts. Measures .5mm thick X 5.500" outside diameter.



Hydraulic/Drive V-Belts

High quality hydraulic and drive belts for all Polar cutters. Just provide the number stamped on your current belt for new ones.



LA Polar locking lever arm. Cast aluminum. It clamps the locking valve on all Polar CE models.



MK151392 Polar cutter electronic relay. For most Polar cutters built before 2000. Includes auxiliary, main relay and spark arrestor.



SA40 Safety arm bumper cushion for Polar cutters. Mounts on the bottom side of the safety arm (245500). Kit includes the plastic strip (259258), the adhesive backed rubber ((259257), 3 flat head mounting screws (201980) and 3 steel spacer washers (259430). Fits the safety arm on Polar cutter models 115, 137 and 155. Kit does not fit Polar 76 and 92 cutters. These are non OEM replacement parts.



SA47 Link for Safety Arm for Polar cutter. Mounts between the side of the safety arm (245500) and the bottom of the solenoid lifting assembly. This bronze link (036424) includes the rubber bushings and the steel sleeves (233801). Fits the safety arm on Polar cutter models 76, 92, 115, 137 and 155. These are non-OEM replacement parts.



SA25 Sliding piece kit for Polar cutter safety arm kit.. Replaces the sliding plastic assembly on the safety arm on Polar cutters. Includes the sliding piece (245509), plastic cover (245508), spring (245520) and 2 socket head cap screws (203263). This is an aftermarket kit.



CA279658 Clamp cable. Fits Polar 66 paper cutter. Wire cable assembly is used for the clamp on the Polar 66. Original polar part #279658. Also replaces cable part #465574.



A749 Lead Screw Spindle Nuts for Polar Cutter backgauge. Metric acme spindle nuts move the backgauge sledge on some of the larger size Polar paper cutters, such as the Polar 115, 137 and 155 cutters. (fixed side nut Polar part numbers are 017062, 017370, 017810 and 233573. Spring side nut Polar part numbers are 017061, 017740, 017809, 233574 and 017459. Fits the following Polar models:

115 EMC MON (115 EMC II) serial number 5103601 to 5331390
 137 EMC MON (137 EMCII) serial number 5104601 to 5341080
 155 EMC MON (155 EMC II) serial number 5221001 to 5321041

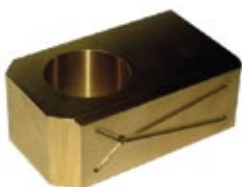


A753 Polar Leadscrew Nuts. These bronze nuts move the backgauge sledge on some of the larger Polar cutters, such as some of the Polar 115, 137 and 155 cutters. (Polar numbers 233573 and 234824). Original Polar number for the set is 055510. Fits the following models:

115 EMC models after serial #5431001
 137 EMC models after serial #5441001
 155 EMC models after serial #5421001
 155 SD and P models after serial #5821201



BB101 Bronze Guide Block for Polar paper cutters. Sliding bronze guide block for the knife carrier in Polar 115 and 137 paper cutters. Fits all models from Polar CE, EM, EMC, EMC II, X, XT, E and ED. Measures 1.531" x 2.408" x 4.750" long with a 40mm diameter reamed hole. Normally installed on the right side of the machine with part #BB102 installed on the left side of the machine. (224340, 209100)



BB102 Bronze Guide Block for Polar paper cutters. Sliding bronze guide block for the knife carrier in Polar 115 and 137 paper cutters. Fits all models from Polar CE, EM, EMC, EMC II, X, XT, E and ED. Measures 1.531" x 2.408" x 4.750" long with a 40mm diameter reamed hole. Normally installed on the left side of the machine with part #BB101 installed on the right side of the machine. (224340, 209100)