

# Paper Cutter

## Replacement Parts

### Catalog



**L.A. Grinding**  
305 N. Victory Blvd.  
Burbank, CA 91502



**Arizona Grinding**  
319 W. Lone Cactus, #D  
Phoenix AZ 85027

[lagrinding.com](http://lagrinding.com)

CA: 818-846-9134

AZ: 623-780-9134

NV: 702-835-9099

## POLAR PAPER KNIVES

Polar Cutter Model	Dimensions	Material	LAG Part #
POLAR 55	26.968 X 3.740 X .382	High Speed Steel	PK041242
		Carbide	TBD
POLAR 58	28.149 X 3.740 X .381	High Speed Steel	PK041243
		Carbide	TBD
POLAR 66	31.693 X 3.740 X .381	High Speed Steel	PK041244
		Carbide	TBD
POLAR 71/72	34.173 X 4.094 X .381	High Speed Steel	PK041245
		Carbide	TBD
POLAR 76 EM	36.417 X 4.330 X .381	High Speed Steel	PK041247
		Carbide	PK051146
POLAR 78 X/XT/E/ED	37.795 X 4.331 X .461	High Speed Steel	PK041248
		Carbide	PK051159
POLAR 92 ED/E/X/XT	43.110 X 4.528 X .461	High Speed Steel	PK041253
		Carbide	PK051218
POLAR 90/92 CE/E/ED/EMC	43.110 X 4.528 X .461	High Speed Steel	PK041252
		Carbide	PK051218
POLAR 115 CE/E/ED/EMC	54.724 X 6.299 X .541	High Speed Steel	PK041255
		Carbide	PK051174
POLAR 115 EMC/ED/AUTO/X/XT FRONT CHANGE	54.724 X 6.299 X .541	High Speed Steel	PK041256
		Carbide	PK051174
POLAR 137 ED/EMC	63.188 X 6.299 X .541	High Speed Steel	PK041257
		Carbide	PK051173
POLAR 137 EMC/ED/AUTO/X/XT FRONT CHANGE	63.188 X 6.299 X .541	High Speed Steel	PK041258
		Carbide	PK051173
POLAR 155 ED/EMC	70.275 X 6.299 X .541	High Speed Steel	PK041260
		Carbide	PK051193
POLAR 155 EMC/ED/AUTO/X/XT FRONT CHANGE	70.275 X 6.299 X .541	High Speed Steel	PK041320
		Carbide	PK051193

### HIGH SPEED STEEL

HSS is a bi-metallic composition consisting of one part 18% tungsten, high speed steel and one part standard grade steel. A special fusion process bonds these two grades of steel. HSS blades generally last 3,000 - 4,000 cuts before you have to change the blade.

### CARBIDE "SUPREME"

For the ultimate long life, abrasive resistance and superior sharpness, a new generation of fine grain and super-fine grain carbide tipped knives are available from LA Grinding Company. These knives, when serviced by LA Grinding Company and used in correct applications, will out perform HSS up to 8 times. The increased cuts between regrinds reduce down time due to knife changes and increase your production.

**INCREASED CUTTING + LESS DOWN TIME = INCREASED PRODUCTION & INCREASED PROFITS**

## **POLAR CUTTING STICKS**

Polar Cutter Model	Length	Color	LAG Part #
POLAR 55	22"	Red	CS101331
		Clear	TBD
		Grey (Carbide)	TBD
POLAR 58	23 1/8"	Red	CS101332
		Clear	TBD
		Grey (Carbide)	TBD
POLAR 66	26 7/8"	Red	CS101333
		Clear	CS101352
		Grey (Carbide)	CS101131
POLAR 71	28 3/8"	Red	CS101335
		Clear	TBD
		Grey (Carbide)	TBD
POLAR 72	28 3/4"	Red	CS101334
		Clear	CS101353
		Grey (Carbide)	CS101646
POLAR 76	30 1/4"	Red	CS101336
		Clear	CS101354
		Grey (Carbide)	CS101132
POLAR 78	31"	Red	CS101337
		Clear	CS101546
		Grey (Carbide)	CS101568
POLAR 90	35 3/4"	Red	CS101341
		Clear	CS101546
		Grey (Carbide)	CS101133
POLAR 92	36 1/2"	Red	CS101342
		Clear	CS101356
		Grey (Carbide)	CS101134
POLAR 115	45 9/16"	Red	CS101345
		Clear	CS101357
		Grey (Carbide)	CS101136
POLAR 137	54 1/4"	Red	CS101347
		Clear	CS101358
		Grey (Carbide)	CS101137
POLAR 155	61 7/16"	Red	CS101350
		Clear	CS101359
		Grey (Carbide)	CS101138



## POLAR SHEAR BOLTS



**S91** Steel shear pin, with collar hex nut. (Nut #205525) Shank is 9mm (.354") diameter except where undercut. 54 mm (2.125") long below the head. Thread is .75 mm pitch (34 threads/inch).



**S103** Alloy steel shear pin complete with washer faced hex nut (231661). The head is 1.180" diameter X .39" thick. A flat on the head is provided as shown. The shank is 2.330" long below the head and has a 16 mm thread.



**S92** Steel shear pin, with hex nut (Nut #205517). Shank is 12 mm (.47") diameter except where undercut. 65 mm (2.563") long below the head. Thread is 1 mm pitch. Hex head is 17 mm (.669") across the flats



**S104** Alloy steel shear pin with washer faced nut (233166) & roll pin. Head is .375" thick X .860" diameter. Shank is 1.844" long below the head. Threaded 12 mm.



**S93** Steel shear pin with hex nut. Shank is 14 mm (.542") diameter except where undercut. 80 mm (3.188") long below the head. Hex head is 19 mm (.75") across the flats. Special nut (205518) is included.



**S105** Alloy steel shear pin, hex head. Supplied with collar nut. 12 mm across the flats. Shank is 1.770" long below the head and is threaded 8 mm. Pitch is .75mm.



**S101** Alloy steel shear pin with washer faced hex nut (230365) & roll pin. The head is 1.469 diameter X .469" thick. Shank is 3.031" long below head & threaded 20 mm.



**S106** Alloy steel shear pin has a 14 mm diameter head with 2 flats. Shank is 45 mm (1.770") long below the head and is 9 mm (.354") diameter except where undercut. Includes collar nut.



**S102** Alloy steel shear pin complete with washer faced hex nut (231661). The head is 1.180" diameter X .39" thick. A flat on the head is provided as shown. The shank is 2.330" long below the head and has a 16 mm thread.



**S107** Alloy steel shear pin. Head is 24 mm (.945") diameter. Shank is 48 mm (1.89") long below the head. Threaded 14 mm X 1.0 mm pitch. The included washer faced hex nut (232343) is 19 mm (.75") across the flats.

Polar Cutter Model	Original Part #	Our Part #
71 EL, 71 CE, 72 EL, 72 CE, 72 CS, PM28	221987, 219563	S105
76, 76 EM, 78, 78 X, 78XS, 78 XT, 78 E, 78 ES, 78 ED	027920, 017605, 053062	S104
80 EL, 80 ST	208943	S106
82 EL, 82 CE, 82 ST, 86 EL, 86 CE, 90 EL, 90 CE, 90 CS, 92 CE, 92 EL, 92 EMC I	206106	S91
92 EMC II, 92 MON, 92 E, 92 EM, 92 S, 92 ED, 92 X, 92 XT (SERIAL #5211248 AND HIGHER)	017771, 260469, 053063	S107
107 EL, 107 ST (AFTER SERIAL #611352), 112 EL, 115 EL, 115 CE, 115 CS, 115 ST, 115 EMC I	221719, 207466	S92
115 EMC II, 115 MON, 115 EMC-MON, 115 E, 115 ED, 115 S, 115 X, 115 XT	231658, 231658A	S103
145 EL, 150 EL, 150 CE, 155 CE, 155 EMC I (155 EMC I ONLY BEFORE MACHINE #221060)	221301, 221302, 206685	S93
155 EMC II (AFTER MACHINE #5221201), 155 MON, 155 ED, 155 XT, 176 ED, 176 X, 176 XT	017486, 260465, 230364	S101
137 EMC II, 137 MON, 137 X, 137 XT, 137 E, 137 ED	231671, 260506, 423024	S102



## POLAR KNIFE BOLTS



**B46** Socket head bolt, 12mm diameter (.472") by 22mm long below the head, 1.75mm thread. Original Polar part #200292. Black oxide finish. FOR some of the POLAR 107, 112, 115, 137, 145, 150 & 155 cutters. (Primarily the CE, EL, EMC I, and EMC MON models.)



**B47** Socker head bolt, 10mm (.394") diameter by 16mm (.63") long below the head. 1.5mm thread. Black oxide finish. Grade 12.9. FOR POLAR 80, 82, 90, 92 CE and 92 CS. Original Polar part #200962.



**B521** Socket head bolt, 10mm (.394") diameter, 21mm (.826") long below washer, 1.5mm pitch. It has a 1 diameter washer, 1/4" thick. Washer is retained by a snap ring. Bolt, washer & ring are plated. (014116, 014483, 021053) FOR POLAR 76, 76 EM and some Polar 72 (28").



**B522** Same as B521, except it is 17mm (.670") long below the washer. (014776, 021054, 200276) FOR POLAR 55, 55 EM, 58 E, 58 EM, 66, 71, 72 (28") and PM 28.



**B66** (025569) Low head hex bolt, 10mm diameter, 20mm (.79") long below the captive washer. The 1" diameter heavy washer has a beveled edge. FOR POLAR 78 models, 92 S, 92 E, 92 ED, 92 ES, 92 X, 92 XT, 92 XS. 92 EMC after serial #6111010, Polar N 92.



**B704** Knife Bolt for newer Polar Paper Cutters (256691 and 409569B). M12 X 24.5 mm long below washer, hex head cap screws. Includes heavy 4mm thick captive washer.

## POLAR HANDLES



**H65** Steel knife changing handle, 1/2" diameter by 5 1/2" long. Threaded 10mm (.394") diameter by 1.5mm pitch. Zinc plated. (Original Polar #206579). FOR POLAR 55, 58, 66, 71, 72, 76, 78, 80, 82, 90, 92 and PM28.



**H66** Steel Knife change handle for POLAR 107, 112, 115, 137, 155 cutters. M12 X 1.75 thread. 1/2" diameter shank by 5" long, zinc plated.



**H67** Steel knife changing handle. 1 1/8" in diameter by 7 1/2" long, zinc plated. M12 X 1.75mm thread. FOR POLAR 107, 112, 115, 137, 155 and 176 cutters. (Original Polar #207315). Used with blade stand #BS10.



**H68** This knife change handle has a 10 mm steel stud 7/8" long. 1.5mm thread pitch. The hand grip is hard plastic & the disc is semi hard plastic. FOR POLAR 82 EL, 82 ST and 86 EL. (Original Polar #010660)



**W10** (224707 AND 010034) Blade Leveling Handle. This 6 1/2" long sturdy handle is made from malleable iron. It fits on the 14mm (.551) square blade leveling shaft.



**W17** Polar Blade Leveling Handle, fits 17mm square shaft. (224998). Cast and machined aluminum blade leveling handle for POLAR 115 E, 115 ED, 115 X, 115 XT, 137 E, 137 ED, 137 X, 137 XT and 155 cutters.



**W19** Blade Leveling Handle. All Steel 9" long, fits 19mm (.748") square shaft.

## POLAR SWITCHES



**CS-500** Polar Cut Switch. This switch fits most Polar paper cutters built before approximately 1985. (027293) This is an aftermarket switch which is a direct replacement for most 4 pin and 5 pin cut switches. The switch and connector cable are pre-wired for a direct replacement. The face measures 127 mm (5") wide by 94mm (3.688") tall. The 5mm diameter mounting holes in the face are 103mm (4.062") apart. Also interchanges with 010053, 010054, 010055, 015105, 015098, 015237, 027293, 014755, 014222, 017325 and others.



**CS-548** Polar Cut Switch. (Equivalent to Polar 033678). This is used on most Polar cutters built after approximately 1984. Used on all Polar model S, E, ED, X and XT paper cutters. It fits the Polar 58 E, 78 E, 78 ED, 78 X, 78 XT, 92 S, 92 E, 92 ED, 92 X, 92 XT, 115 S, 115 E, 115 X, 115 XT, 137 X, 137 E, 137 ED, 137 X, 137 XT, 155 E, 155 X, 155 XT, 176 E, 176 ED, 176 X and 176 XT cutters. This is made in the USA and is a direct replacement to the original. The switch and connector cable are pre-wired for a direct replacement. The internal switch components are EATON. The face measures 126mm (4.938") wide by 75mm (2.938") tall. The 5mm mounting holes in the face are 105mm (4.125") apart.



**CS-490** Polar Cut Switch. This switch fits the Polar 55, Polar 58 E and 58 EM models. (027291) Its face plate is shorter (top to bottom) than on many of the other Polar cut switches. This is an aftermarket switch which is a direct replacement. The switch and connector cable are pre-wired. The face measures 126mm (4.938") wide by 76mm (3") tall. The 5mm diameter mounting holes are 104mm (4.125") apart.



**CS-572** Polar Cut Switch. This cut button is used on the front of the table on all sizes of Polar N, Polar N+, Polar N Pro HD and Polar N AT HD paper cutters. (Replaces Polar part # 064815 ZA3.064815). This is an aftermarket switch, made in the USA, which is a direct replacement for the original. The 4 connector pins are gold plated for long life. The switch and connector cable are pre-wired for a direct replacement. The internal switch components are Eaton M22 modular switch assembly. The face of the switch measures 126mm (4.938") wide by 75mm (2.938") tall. The 5mm diameter mounting holes in the face are 105mm (4.125") apart.



**M535** Toggle Switch for Polar Cutter Cut Line. Toggle Switch to switch from cut line light to the table light on Polar paper cutters. This is a direct replacement for the original Marquardt toggle switch #0175.0101, which is no longer available. Equivalent to the original Polar part number 210284. Rated for 15A at 250 volt.



**M627** Knob Stem for Polar Main Power Switch. Fits Polar 227128. This plastic pin fits the Eaton main power switch on all Polar cutters built after 2004. It goes between the switch body and knob.



**M629** Encoder for Backgauge, fits Polar 66, 250585A. This rotary encoder or rotary impulse generator is mounting on the control panel of the Polar 66 paper cutters. It is used to control the back gauge on these cutters. Made in Germany. Original Polar part number is 250585 or 250585A.



**M540** Micro Switch for Polar Backgauge. The Honeywell Micro Switch is for the Polar clamp top position (229321) and the backgauge front and rear limit position. Direct replacement for the original Burgess GVTFYR switches which are no longer available. Equivalent to Polar part number 211829 and 210413. This is also a direct replacement for the Miltac SAIA 209 XGK2 switch used on the hand fine adjustment on some Polar cutters. Original Polar part number 213127. Also a direct replacement for the Hartmann Series F66 switch used inside some of the very early Polar cut buttons.



**M542** Polar Cutter Backgauge Micro Switch. Honeywell Micro Switch for the Polar paper cutter clamp top position and for the backgauge front and rear limit position. This is a direct replacement for the original Burgess GVTFYR switches which are no longer available. Equivalent to the original Polar part number 211829 and 210413.



## POLAR GEARS



**G315** Polar Pinion Knife Change Gear 014628, 245954. This bronze pinion or "gear" is used in the blade carrier during blade changes. It measures 25mm (.98") in diameter at the large end by 65mm (2.56") long. There are 7 gear teeth at the back end and there is an 8mm hex socket at the front end.



**M633** Toothed plate for Polar 92, 222744, M633 toothed plate for the knife changing mechanism on Polar 92 paper cutters. Equivalent to Polar part number 222744.



**G325** Pinion Gear for Polar hand fine adjustment mechanism. Machined from Delrin plastic. Supplied with internal needle bearing. 15 helix teeth. (206286)



**G326** Spur gear for Polar hand fine adjustment mechanism. Machined from Derlin plastic. 55 helix teeth. (206273)



**G327** Polar Track Change Gear. Used on Polar 115 CE and Polar 155 CE cutters built during the 1970's. The gear is used in the mechanism which changes the "track" on the wide magnetic tape on cutters with the magnetic tape program storage system. This 15 tooth gear is machined from aluminum and is a direct replacement for the metal and plastic original gear. (010591)



**G319** Hand Fine Spur Gear (equivalent to Polar 218631). This 12 tooth gear is used in the backgauge hand fine adjustment mechanism on Polar 72 EL, 72 CE and PM cutters, after machine serial number 4551001. Outside diameter is 2.97" (75.5mm). It's overall width is approximately 1.57" (40mm). 19mm diameter bore and 6mm wide keyway.



**G320** Hand Fine Pinon Gear (equivalent to Polar 218628). This 6 tooth gear is used in the hand fine adjustment mechanism on some early Polar EL and Polar CE paper cutters. Measures 1.47" (37mm) in diameter over the 6" teeth. Overall length is approximately 1.062" (27mm) long. It has a 14mm bore and is drilled for a roll pin.



**G329** Polar Lead Screw Gear equivalent to Polar 222205 (ZA3.222205). This black plastic gear has 60 teeth and measures approximately 155mm (6.125") in diameter by 14.8mm (.563") wide at the gear teeth. It has a 19mm (.750") diameter bore with a 6mm wide keyway. Used on Polar 115 EMC and 115 EM (up to machine serial #5731401), 137 EMC (before machine serial #5721001). This does NOT fit any Polar Autotrim models. This does NOT fit and Polar 58, 76, 78 or 92 models.



**G321** Hand Fine Spur Gear (equivalent to Polar 218629). This 22 tooth gear is used in the hand fine adjustment mechanism on some of the early Polar EL and Polar CE paper cutters. Outside diameter of 4.97" (126mm). Overall width is approximately 1.57" (40mm). It has a 19mm diameter bore (.75") and a 6mm wide keyway.



**G330** Polar Lead Screw Gear, equivalent to Polar 245004. Black plastic gear has 106 teeth, measures approximately 162mm (6.375") in diameter by 15mm (.563") wide at the gear teeth. Has a 19mm (.750") bore with a 6mm wide keyway.



**G324** Polar Claw Clutch Gear, equivalent to Polar number 206292. This 6 lugged "gear" engages out part number G325, the Polar hand fine adjusting gear. It is used in the backgauge hand fine adjustment mechanism on many Polar EL, ST and CE cutters, such as the 71 & 72 models (before machine serial number 4551001), 90 CE, 115 CE (before machine serial number 4431931), 150 and 155 CE cutters. It measures 1.250" in diameter at the claw tooth end by



**G331** Polar Fine Adjustment Gear, Polar part #245078. This cast aluminum handfine gear has 11 teeth and measures approximately 19.5mm (.77") in diameter by 34mm (1.34") long. Requires drilling during assembly. Supplied with new spring pin.



**G335** Polar Lead Screw Gear, equivalent to Polar #245010. It has 68 teeth and is approximately 105mm (4.125") in diameter. It measures 15mm (.563") wide at the teeth. Has a 19mm (.750") diameter bore with a 6mm wide keyway. Fits 76 EM cutters after serial #5761301 and 78 and 92 cutters after serial number



## POLAR GEARS CONTINUED



**G338** Polar Lead Screw Gear, Equal to Polar 224231. This black plastic gear has 38 teeth and measures approximately 100mm (3.938") in diameter by 14.7mm (.563") wide at the gear teeth. It has a 19mm (.750") diameter bore with a 6mm wide keyway. Fits Polar 76EM up to machine serial #5761301, Polar 92 EMC and Polar 92 EMC MON models up to serial #5711301, Polar 92 s, Polar 92 E, Polar 92 EM, Polar 92 ED, Polar 92 X and Polar 92 XT up to serial #6511201.



**G314** Polar Pinion Gear Kit equal to Polar 059882, 044924 and 256969. This kit is Polar original part #059882. Includes the brass pinion gear (044924 or 256696), washers (202843, 222745, 220951, 022332), screws (202080, 201566), 2 black plastic gibs (221894) and white plastic backing plate (026634). The gear measures approximately 25.2mm (.98") in diameter at the large end by 85mm (3.35") long. There are 7 gear teeth at the back end and there is an 8mm hex socket at the front end.

## POLAR SLOT COVER BELTS

Polar Cutter Model	Serial # Range	Original Part #	Our Part #
76 EM	All Serial #'s	017380, 018317	GB-425
78 X, 78 XS, 78 XT, 78 E, 78 S, 78 ES, 78 ED	All Serial #'s	33637	GB-426
90 CE	4211001 - 4611715	206458	GB-410
92 CE, 92 CS	4711001 - 5011700	221183	GB-411
92 EMC 1, 92 EMC 2, 92 EM	5116401 - 5511250	224650	GB-429
92 S, 92 SD, 92 SDP, 92 E, 92 ES, 92 ED, 92 EM, 92 EMC 2, 92 EMC MON	5511300 - 6511120	242587	GB-434
92 S, 92 E, 92 ED, 92 X, 92 XT	6401101 & HIGHER	33956	GB-440
115 CE	4232001 - 4431931	208513	GB-412
115 CE, 115 CS	4503001 - 4731747	218422	GB-427
115 CE, 115 CS	4732001 - 4732730	221755	GB-428
115 CE, 115 CS, 115 EMC I	4831001 - 4831804 (CE, CS), 4836001 - 4836040	222178	GB-420
115 CS, 115 CE, 115 EMC 1, 115 EMC 2, 115 EMC MON	4931001 - 5136438	223613	GB-430
115 S, 115 SD, 115 SDP, 115 E, 115 ES, 115 EM, 115 ED, 115 EMC 2, 115 EMC MON	5531001 - 6432006	242627	GB-431
115 S, 115 E, 115 ES, 115 ED, 115 X, 115 XT	6403101 & HIGHER	33961	GB-436
137 EMC	5104601 - 5441300	231216	GB-445
137 S, 137 SD, 137 SDP, 137 E, 137 ES, 137 ED, 137 EM, 137 EMC 2, 137 EMC MON	5541001 - 6441239	242588	GB-437
137 S, 137 E, 137 ES, 137 ED, 137 X, 137 XT	6404101 & HIGHER	33959	GB-433
150 CE	4321001 - 4421203	215263	GB-413
155 CE, 155 EMC 1, 155 EMC 2, 155 EM, 155 SD, 155 SDP	4921001 - 5421190	223598	GB-435
155 S, 155 SD, 155 SDP, 155 E, 155 ES, 155 ED, 155 EM, 155 EMC 2, 155 EMC MON	5521001 - 6421056	242590	GB-438
155 S, 155 E, 155 ED	6502101 & HIGHER	033965	GB-441
155 EMC, 155 EM, 155 SD, 155 SDP	5521001 - 6421056	242591	GB-442



## POLAR SLOT COVER BELTS CONTINUED



**GB-425** Slot Cover Belt for Polar 76 EM paper cutter. This green belt is equivalent to the original Polar part numbers 017380 and 018317.



**GB-426** Slot Cover Belt for Polar 78 paper cutters, such as Polar 78 X, 78 XS, 78 XT, 78 E, 78 S, 78 ES and 78 ED models. This belt is equivalent to Polar part #033637.



**GB-427** Slot Cover Belt for Polar 115 CS and Polar 115 CE cutters. This ONLY fits Polar cutters between serial number 4503001 to 4731747. Equal to and direct replacement for the original Polar part #218422.



**GB-428** Slot Cover Belt for Polar 115 CS and 115 CE cutters. This ONLY fits Polar cutters between machine serial number 4732001 to 4732730. Equal to and a direct replacement for the original part number 221755.



**GB-429** Slot Cover Belt for SOME Polar 92 EM, 92 EMC I and 92 EMC II cutters. ONLY fits from machine serial number 5101601 to 5511250. This belt is equivalent to Polar part #224650.



**GB-430** Slot Cover Belt for Polar 115 CE & CS cutters from machine serial number 4931001 to 5131193 and for Polar 115 EMC and EMC MON cutters from machine serial number 4936001 to 5531350. Equivalent to Polar 242627.



**GB-431** Slot Cover Belt for Polar 115 S, Polar 115 SD, Polar 115 SDP, Polar 115 E, Polar 115 ES, Polar 115 EM, Polar 115 ED, Polar 115 EMC II and Polar EMC MON paper cutters, from machine serial number 5531400 to 6432006. This belt is equal to Polar 242627.



**GB-433** Slot Cover Belt for most Polar 137 E, 137 ED, 137 X and 137 XT paper cutters. This belt is equivalent to the original Polar number 033959 & 033959N.



**GB-434** Slot Cover Belt for Polar 92 S, Polar 92 SD, Polar 92 SDP, Polar 92 E, Polar 92 ES, Polar 92 ED, Polar 92 EM and Polar 92 EMC II paper cutters between machine serial number 5511301 to 6511120. This green belt is equivalent to the original Polar part #242587.



**GB-435** Slot Cover Belt fits Polar 155 CE (between serial #4921001 to 5021003), Polar 155 EMC (between serial #4926001 to 5126147), Polar 155 EMC II (between serial #5102601 to 5421190), Polar 155 EM (between serial #5221201 to 5421190), Polar 155 SD (between serial #5221001 to 5321040), Polar 155 SDP (between serial #5421001 to 5421190). Equivalent to Polar number 223598.



**GB-436** Slot Cover Belt for Polar 115 S, 115 E, 115 ES, 115 ED, 115 X and 115 XT cutters after machine serial #6403101. This belt is equivalent to the original Polar part #033961 & 033961N.



**GB-437** Slot Cover Belt for Polar 137 S, 137 SD, 137 SDP, 137 E, 137 ES, 137 ED, 137 EM, 137 EMC II and 137 EMC MON between serial number 5541001 to 6441239. Equal to Polar number 242588.



**GB-438** Slot cover belt for Polar 155 S, 155 SD, 155 SDP, 155 E, 155 ES, 155 ED, 155 EM, 155 EMC II and 155 EMC MON cutters between serial number 5521001 to 6421056. Equal to original Polar number 242590.



**GB-440** Slot Cover Belt for the later models of the Polar 92 S, Polar 92 E and Polar 92 ED paper cutters. This belt fits cutters built after machine serial number 6401101. Also fits Polar 92 X and Polar 92 XT models. Equal to Polar number 033956.



**GB-441** Slot Cover Belt for most Polar 155 S, 155 E and 155 ED paper cutters. This does not fit cutters before machine serial number 6502101. Equivalent to the original Polar part number 033956.



## POLAR SLOT COVER BELTS CONTINUED



**GB-442** Slot Cover Belt for the Polar 155 EMC, 155 EM, 155 SD and 155 SDP paper cutters. This belt fits cutters built between machine serial #5521001 to 6421056. Equivalent to the original Polar part #242591.



**GB-445** Slot Cover Belt for some of the 137 EMC cutters. Equivalent to Polar part #231216. This belt only fits Polar 137 EMC cutters from machine serial #5104601 to 5441300.



**GB-405, GB-406** Clamping plate for Polar Cutter Slot Cover Belt grips the end of the green slot covering belt to attach the belt to the cable. Measures approximately 60mm (2.36") long by 16mm (.625") wide.

**GB-405** clamp plate has drilled holes for the nut end of the bolts. Original part #218423.

**GB-406** clamp plate has countersunk holes for the flat head screw heads. Original part #222144.

## POLAR PULL ARM PARTS



**PA1025** Polar Pull Arm Assembly. Complete pull arm assembly fits Polar 112 EL, 112 ST, 115 CE, 115 CS, 115 EL and the early Polar 115 EMC paper cutters. (013820, 014128). These are completely new, non OEM, aftermarket parts. The arms are machined complete from SAE 1045 steel. This assembly is supplied as shown in photo, complete with the following parts:

- Upper Threaded Arm with needle bearing. (013820, 014128)
- Jam Nut - Left Hand (200609)
- Turnbuckle Nut (207465)
- Jam Nut - Right Hand (200608)
- Safety Clip (206626, 013635, 010635)
- Lower Threaded Arm with Bronze bushing. (208232, 221716)
- Lower Connector with bronze bushing. (207462, 221716)
- Guide Shaft with set screw and jam nut. (207463, 218649)
- Two Shear Bolts with shear bolt nuts. (207466, 221719)



**PA1016** Lower Arm for Polar Cutter Pull Arm 221716. Fits some of the older Polar models; such as the Polar 115 CE paper cutters. Equivalent to original Polar part #221716. Includes the internal bronze bushing (221718) for the guide rod to fit through. Threaded section has M30 X 1.5mm right hand threads.



**PA1550** Turnbuckle Nut for Polar pull arm assembly. Fits Polar EMC MON, EMC II, E, ED, X and XT of Polar 115 and 137 paper cutters. Overall length is 120mm (4.750") long, outside hex size of 36mm, has both a LEFT hand and RIGHT hand M24 internal thread. Equal to Polar 230046, 230046A and 258645.



**PA1551** Polar upper arm. (Polar equivalent 230043A, 246050A). It fits the newer models of Polar 115 and Polar 137 cutters (115 EMC MON, 115 EMC II, 115 S, 115 E, 115 ED, 115 X, 115 XT, 137 EMC MON, 137 EMC II, 137 S, 137 E, 137 ED, 137 X and 137 XT). This is a new aftermarket part. The overall length measures approximately 11.500" and it has a LEFT hand M24 thread. It is machined from SAE 1045 steel. Includes new needle bearing installed.



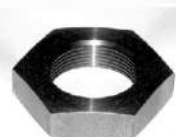
**PA800** Polar 92 Puull Arm (027315). Fits Polar 92 EMC MON (after serial #5311001), 92 E, 92 ED and 92 S (Polar #033245, 033245A, 027315 and 027315A). All new, non OEM, aftermarket parts. The arms are machined complete from SAE 1045 steel. This assembly is supplied complete as shown in photo.



**PA950** Turnbuckle Nut for Polar pull arm assembly. Fits Polar CE and EL models of the Polar 80, 82, 90 and 92 cutters. Equal to Polar 206015. Also fits 92 EMC cutters up to machine serial #5211550. Overall length is 105mm (4.125") long, hex size is 36mm and it has both LEFT and RIGHT hand M24 internal threads.



**PA1010** Turnbuckle nut for Polar pull arm assembly. Fits Polar 112 EL, 112 ST, 115 CS, 115 CE, 115 EL and early 115 EMC models. Equal to Polar 207465. Overall length is 120mm (4.750"), hex size is 46mm. It has both left hand and right hand M30 internal threads.



### Polar Turnbuckle Jam Nuts

Our Part #	Polar #	Hex Size	Thread Size
PA1011	200608	46 mm	M30 X 1.5 Right Hand
PA1012	200609	46 mm	M30 X 1.5 Left Hand
PA1552	200606	36 mm	M24 X 1.5 Right Hand
PA1553	200607	36 mm	M24 X 1.5 Left Hand



## POLAR PULL ARM PARTS CONT.



### Polar Guide Shaft For Pull Arm Assembly

These are machined from centerless ground drill rod.

Part #	Cutter Model	Diameter
GS-344	72 CE	10MM
GS-345	PM 28	10MM
GS-346	80 EL	11MM
GS-348	82 EL, 90 EL, 90 CE, 92 CE, 92 EMC	11MM
GS-350	115 CE	14MM
GS-352	115 EL, 115 EMC	14MM
GS-353	115 EMC II, 115 XT, 137 E, 137 XT	11MM
GS-354	150 CE, 155 CE, 155 EL, 155 EMC I	18MM
GS-355	92 EMC II	10MM
GS-356	78 E, 78 ES, 78 ED, 78 X, 78 XT	10MM

## POLAR CLUTCH HANDLES



Part #	Cutter Model	Length	Thread
CH1	71 CE, 71 ST, 72 CE, PM 28 (013819)	102MM	8MM
CH2	76 EM, 78 E, 78 S, 78 ES, 78 ED, 78 X, 78 XS, 78 XT (017490)	88MM	8MM
CH3	82 EL, 82 ST	50MM	8MM
CH4	90 EL	60MM	8MM
CH5	90 CE, 92 CE, 92 EMC, 92 E, 92 EM, 92 ED (010958, 034006)	64MM	8MM
CH6	92 EL	80MM	8MM
CH7	115 EL	68MM	10MM
CH8	112 EL, 115 CE, 115 E, 115 S, 115 ED, 115 X, 115 XT, 115 EMC, 115 EMC MON (010231)	80MM	10MM
CH10	150 EL, 155 EMC, 155 MON, 155 CE, 155 E, 155 ED, 155 X, 155 XT, 176 E, 176 ED (010231)	80MM	10MM
CH11	137 EMC (AFTER 5241150), 137 E, 137 ED, 137 X, 137 XT (017487)	64MM	8MM

## POLAR CLUTCH HANDLES CONT.



### Flywheel Clutch Handle Helper Bar

Made of steel tubing. Used to apply even torque when turning the clutch handles.

**HB24** (207321, 208175 & 232309) Long Bar - holes are 8.500" apart on one side, 7" apart on the other side.

**HB16** Short Bar - holes are 6.375" apart (208175)

## POLAR AIR JETS

### Air Jets for Air Tables

These air jets are used in guillotine paper cutter air tables and air feed tables for material flotation.



**AJ501** 15mm diameter X 30mm long (including ball) for early Polar paper cutters.



**AJ502** 15mm diameter X 40mm long (including ball) for later Polar paper cutters (generally after 1968) Polar #022513



**AJ504** 17.1mm in diameter at the top flange and are 32mm long. This style has been used in Polar cutters built since the 1990's. For E, ED, X and XT models. Polar #042808



**HOSE-27** Spiral steel wire reinforced air hose for Polar paper cutters. 27mm inside diameter. It is equivalent to the original pneumatic hose used to connect the air pump to the manifold on the underside of the table. Sold per yard.

## POLAR BLADE CLAMP SHIMS



**BS-2250** Blade clamp shims used in Polar 115 EMC (after machine #5103601), Polar 115 EM (after machine #5103601), Polar 137 EMC, Polar 155 EMC and Polar 176 EMC cutters. Overall length is approximately 177mm long by approximately 40mm wide. Tapered screw mounting holes are spaced 76mm (3") apart. Sold as a kit which includes: two plastic shims (224904), two double sided adhesive shims (224910) and 6 plastic screws (201681)



**BS-2260** Clamp Shim Support for Polar 66 cutter. Original Polar part #402969. Includes 2 plastic flat head M6 screws. Overall length is approximately 104mm long by 39mm wide by 4mm thick. Countersunk mounting holes are spaced 65mm (2.563") apart.



## POLAR BLADE CLAMP SHIMS CONT. POLAR FALSE CLAMP PARTS CONT.



**BS-2245** These blade clamp shims fit Polar 76 EM and some Polar 92 EM, 92 EMC, and 92 EMC MON cutters (before serial #5511250). The overall length is 127mm (5") long by 40mm (1.563") wide. The tapered screw mounting holes are spaced 100mm (3.968") apart. They are sold as a kit

- 2 plastic shims (230056)
- 2 double sided adhesive shims (230493)
- 4 plastic flat head screws (201681)



**BS-2268** These blade clamp support pads are used on some Polar 115, 137 and 155 paper cutters, such as the Polae E, ED, X and XT cutters. 180mm long X 39mm wide. They are sold as a kit which includes the following parts:

- 2 plastic shims (281710 or 271507)
- 6 plastic flat head screws (203535)



**BS-2264** These blade shims are used in Polar 78 and Polar 92 paper cutters, such as the Polar 78 X, 78 XS, 78 XT, 92 S, 92 E, 92 ED, 92 X and 92 XT cutters. 130mm long (5.125") by 39mm (1.531") by 4mm thick. They are sold as a kit which includes the following parts:

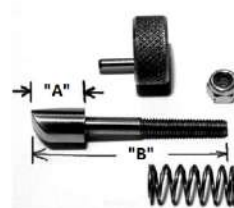
- 2 plastic shims (281709)
- 4 plastic flat head screws (203535)



**P210** Polar slider or push pin. This slider was originally made of black plastic. Ours is made of aluminum. Measures 9.5mm (.375") in diameter X 25.5mm (1") long. It is used to release the false clamp latch pin. Equal to Polar 241828. Does not fit the Polar 155 and 176 models. Comes with a black pastic hole plug. Polar part #241827.



**P220** Polar slider or push pin. this slider was originally made of black plastic. Ours is made of aluminum. Measures 9.5mm (.375") in diameter X 42mm (1.625") long. It is used to release the flase clamp latch pin. Equal to Polar #241829. Only fits the Polar 155 and 176 models. Comes with a plastic hole plug. Polar part #241827.



### Polar False Clamp Latch

**Pin Assembly** Each assembly includes the latch pin, the spring (205687), the knurled knob with lock pin (205527, 200787) and a self-locking hex nut.

Part #	Original Polar #	"A" Dim.	"B" Dim.
P325	216198	12MM	43MM
P326	206036	20MM	65MM
P327		30MM	70MM

## POLAR FALSE CLAMP PARTS



**P10** Replacement pin for false clamp for Polar cutters. Measures 7.75mm in diameter X 46.5mm (1.85") long, notched as shown. (206035)



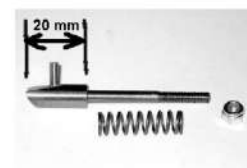
**P11** False clamp pin for the later models of Polar cutters after approximately 1984. Measures 7.75mm in diameter X 40mm (1.58") long, notched as shown. (232338)



**FPA25** False clamp pin installation tool. This steel anvil tool is 1.750" in diameter by 4" long. It is used to position and hold the Polar false clamppin in place while the bottom end of the pin is peened over with a hammer. One end is machines to fit over the P10 pin while the opposiate end fits over the P11 pin.



**P350** Polar False Clamp Latch Pin Assembly. For smaller Polar models built after approximately 1982, including the Polar 55 EM, 58 E, 66, 76 EM, 78 X, 78 XS, 78 XT, 78 S, 78 E, 78 ES and 78 ED. Measures approximately 65mm (2.563") long. The main latch area is 8mm in diameter and 12mm long. This assembly includes the latch pin (232336), the perpendicular dowel pin (201558), the apring (207788) and a self locking hex nut (201091).



**P351** Polar False Clamp Latch Pin Assembly. Fits Polar 92, 115, 137 and 155 ED, X, XT and XS models. Fits all 78 models. Measures approximately 60mm (2.375") long. The main latch area is 8mm in diameter by 20mm long. Includes latch pin (232333), perpendicular dowel pin (201558), spring (205687) and self locking hex nut (201091).

## POLAR TOOLS



### Blade Setting Height Gages

Made of nylon, steel & aluminum

**G101** For Polar Cutters 82 - 92 (013746)

**G102** For Polar cutters 115 EL, early 115 CE up to 155 cutters (013747)



**K14** (010113, 206579) This 1/4 turn blade change handle has a solid plastic body. The steel shank is 10mm (.390") in diameter. Polar 90 EL, 90 CE, 82 CE, 112 ST, 115 CE, 115 EL, 115 ST, 150 EL, 150 CE and 155 CE.



**K15** Blade support bar for blade changing on Polar 72 CE, 76 EM and PM28 cutters. 10" long steel bar with stepped side pin. (010755, 0013977, 017918)

Knife Bolt "T" Wrench, Steel Construction

Our Part #	Length	Key Size
W74	24"	10mm hex
W75	24"	8mm hex



**W81** 19mm (.750") socket. 24" long knife bolt "T" wrench with socket head welded in place.



**BS10** Blade Stand for Polar cutters. (014266, 014560, 014569). Machined aluminum with a plastic base. Normally used in pairs. This is used with handle #H67 which fits through the slot on this stand.

**Polar Type Wrench** Open end wrench for Polar paper cutters. DIN 894, single end, black phosphate coated.



Our Part #	Size
W89432	32mm
W89436	36mm
W89441	41mm
W89446	46mm



**W89436X** 36mm special head Polar type wrench. Open end wrench. DIN 894, single end, black phosphate coated. Equivalent to Polar 231094 and 231094A. The width of the head has been cut down for added clearance.

## POLAR MISC. PARTS



**M546** Polar Gearbox Shaft Bolt. This M12 metric bolt fits on the end of the gearbox output shaft on many models of Polar paper cutters. Equal to Polar #224899.



**CAL10** Polar Pressure Control Handle Cast aluminum with number reference scale (010784, 010028). Exact replacement for original plastic handle.



**SW** Solid Nylon Wedge for pushing on the Polar clamp hydraulic valve plunger. .750" x 1" x 2.438" long with brass insert (8mm thread). (205844)



**SNC** Nylon Wedge for Polar clamp pedal cam, 20mm x 47mm x 60mm long with 6mm threaded brass inserts for Polar 92 - 155 EMC II, X, XS, XT, S, E, ED. (017085 and 033268).



**SWB270** Control Cam Wedge for Polar cutters. Equivalent to Polar #270789. This plastic wedge measures 50mm x 45mm x 12mm thick. The three tapped holes have M6 x 1mm threads.



### Polar Blade Back Up Bars

Steel, 15.750" long with a captive central screw. (2 bars per set).

**BB115CE** with 12mm bolt. (014179 and 207455). For Polar 115 CE, EMC, EMC MON, E, ED, X, XT, 137 S, EMC, E, ED (before serial #6541101), X, XT, 155 E, ED, EMC (before serial #6021101), X, XT, 176 E, ED, X and XT.

**BB115EL** with 8mm bolt. (207455) For Polar 112 EL & 115 EL.



**BB2125** Polar Blade Spacer 045196C (274865C, 201889C, 270239C). Blade back up block kit for Polar cutters. For some of the Polar 115 S, E, ED, X, XT, 137 S, E, ED, X, XT, 155 E, ED, X, XT, 176 E, X and XT cutters.



### POLAR LIGHT BULBS & LAMPS

Light bulbs for older cutters and Polar lamps for newer cutters. Would need length of lamps in order to get the correct one.



## POLAR MISC. PARTS CONT.



### POLAR CUT STICK RETAINERS

These plastic blocks are 5/8" square by 1.375" long.

**CSTL** (Left 206225)

**CSTR** (Right 206224)



**CST-66** Polar Cutter Stick Retainer. Equivalent to Polar #280273, 280247 and 444530). This plastic cutting stick retaining block is used to hold the cutting stick in place. Fits Polar 66. Made in USA.



**CST-444** Polar Cut Stick Retainer. Equivalent to Polar part #ZA3.444532). These plastic blocks measure 15mm (.563" square x 52mm (2.062") long. They mount on the left side of some Polar X and XT cutters.



**CST-437** Polar Cut stick retainer. Equivalent to Polar part #ZA3.437922. These plastic blocks are 15mm (.625") square x 37mm (1.438") long. They mount on the right side of the table on some of the Polar X and XT cutters.



### CARBON BRUSHES

**CB10** Carbon Brush for Backgauge reversing on Polar Cutters. Equivalent to 210612. This carbon brush is used on the backgauge reversing button on many Polar cutters made after 1968. Measures 4mm square X 15mm long.



**CB11** For old Polar EL cutters built before 1968. 8mm x 29mm x 25mm.



**CB12** For Polar 71-76 magnetic clutch. Used on 71 ST, 72 CE, 76 EM, 78 E, 78 ES, 78 ED, 78 X and 78 XT cutters. 6.5mm x 10mm x 15mm



**M560** Polar Carbon Brush Holder. Equivalent to Polar part #225903. Comes with new carbon brushes. Fits Polar 76 EM cutters after machine serial number 5361175. This also fits all of the Polar 78 E, 78 S, 78 ES, 78 ED, 78 X, 78 XS and 78 XT paper cutters.



**K25** Knob for Polar Backgauge hand fine adjustment. Equivalent to Polar part #017457 and 017302. This steel and plastic knob fits under the table on the front of the cutter. Measures 2.750" in diameter. It has two M8 tapped holes. Includes set screws and switch button.



**K25A** Switch button for Polar Backgauge Handfine Adjustment Knob. Switch button, mounts, in the center of the handfine adjustment knob on the front of many Polar cutters. Equivalent to the original Polar part #017769. It has a 5mm thread.



**V Belt Pulley Assembly** for Polar CE paper cutters. (010280, 010127). This machined aluminum split pulley is a direct replacement for the original die cast pulley used on the Polar model CE tapered hydraulic pump output shaft. Included is both pulley halves, three steel adjusting shims and three bolts to hold the two halves together. Each shim is .5mm (.020") thick. The pulleys have threaded steel inserts where the two pulley halves bolt together.

**SP187** Hub Length 1/2"

**SP188** Hub Length 7/8"



**SP182** Polar Split Pulley Shim for V belt split pulley for Polar CE paper cutters. (206640, 266641). This laser cut steel shim is used between the adjustable pulleys on the Polar model CE hydraulic pump pulleys. Measures .5mm thick x 3.938" outside diameter.



**SP290** V Belt Pulley Assembly for Polar EMC II, E and ED cutters. (231482, 231481 and 017289). This precision machined aluminum split pulley is a direct replacement for the original die cast pulley used on the tapered output shaft on the Polar model EMC II hydraulic pump. Outside diameter measures 7.375". This pulley has been hardcoat anodized to give maximum hardness and wear resistance. Fits the 92 EMC II, E, ED, 115 EMC II, E, ED, 137 EMC II, E, ED, 155 EMCII, E, ED, 176 E and ED models. Included is both pulley halves, three steel adjusting shims (230068 and 240788) and the bolts to hold the two halves together. Each shim is .5mm thick. The hub half includes threaded steel inserts to prevent threads from stripping.



## POLAR MISC. PARTS CONT.



**SP202** Polar split pulley shim. For v belt split pulley for Polar EMC cutters. (230068 & 240788). This laser cut steel shim is used between the adjustable split pulley on the Polar EMC hydraulic pump output shafts. Measures .5mm thick X 5.500" outside diameter.



### Hydraulic/Drive V-Belts

High quality hydraulic and drive belts for all Polar cutters. Just provide the number stamped on your current belt for new ones.



**LA** Polar locking lever arm. Cast aluminum. It clamps the locking valve on all Polar CE models.



**MK151392** Polar cutter electronic relay. For most Polar cutters built before 2000. Includes auxiliary, main relay and spark arrester.



**SA40** Safety arm bumper cushion for Polar cutters. Mounts on the bottom side of the safety arm (245500). Kit includes the plastic strip (259258), the adhesive backed rubber ((259257), 3 flat head mounting screws (201980) and 3 steel spacer washers (259430). Fits the safety arm on Polar cutter models 115, 137 and 155. Kit does not fit Polar 76 and 92 cutters. These are non OEM replacement parts.



**SA47** Link for Safety Arm for Polar cutter. Mounts between the side of the safety arm (245500) and the bottom of the solenoid lifting assembly. This bronze link (036424) includes the rubber bushings and the steel sleeves (233801). Fits the safety arm on Polar cutter models 76, 92, 115, 137 and 155. These are non-OEM replacement parts.



**SA25** Sliding piece kit for Polar cutter safety arm kit. Replaces the sliding plastic assembly on the safety arm on Polar cutters. Includes the sliding piece (245509), plastic cover (245508), spring (245520) and 2 socket head cap screws (203263). This is an aftermarket kit.



**CA279658** Clamp cable. Fits Polar 66 paper cutter. Wire cable assembly is used for the clamp on the Polar 66. Original polar part #279658. Also replaces cable part #465574.



**A749** Lead Screw Spindle Nuts for Polar Cutter backgauge. Metric acme spindle nuts move the backgauge sledge on some of the larger size Polar paper cutters, such as the Polar 115, 137 and 155 cutters. (fixed side nut Polar part numbers are 017062, 017370, 017810 and 233573. Spring side nut Polar part numbers are 017061, 017740, 017809, 233574 and 017459. Fits the following Polar models:

115 EMC MON (115 EMC II) serial number 5103601 to 5331390  
137 EMC MON (137 EMCII) serial number 5104601 to 5341080  
155 EMC MON (155 EMC II) serial number 5221001 to 5321041

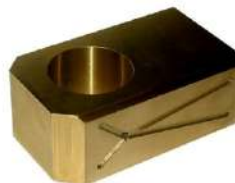


**A753** Polar Leadscrew Nuts. These bronze nuts move the backgauge sledge on some of the larger Polar cutters, such as some of the Polar 115, 137 and 155 cutters. (Polar numbers 233573 and 234824). Original Polar number for the set is 055510. Fits the following models:

115 EMC models after serial #5431001, 137 EMC models after serial #5441001, 155 EMC models after serial #5421001, 155 SD and P models after serial #5821201.



**BB101** Bronze Guide Block for Polar paper cutters. Sliding bronze guide block for the knife carrier in Polar 115 and 137 paper cutters. Fits all models from Polar CE, EM, EMC, EMC II, X, XT, E and ED. Measures 1.531" x 2.408" x 4.750" long with a 40mm diameter reamed hole. Normally installed on the right side of the machine with part #BB102 installed on the left side of the machine. (224340, 209100)



**BB102** Bronze Guide Block for Polar paper cutters. Sliding bronze guide block for the knife carrier in Polar 115 and 137 paper cutters. Fits all models from Polar CE, EM, EMC, EMC II, X, XT, E and ED. Measures 1.531" x 2.408" x 4.750" long with a 40mm diameter reamed hole. Normally installed on the left side of the machine with part #BB101 installed on the right side of the machine. (224340, 209100)

## PAPER JOGGERS



**A fully assembled jogger block made of 3/4" heavy-duty Kimoplastic™. Strong magnetic base and a face assembled at a perfect 90° angle helps jog bottom sheets perfectly and align paper stocks for square, precise cuts. A rounded handle and easy sliding capabilities reduce operator fatigue and provides a natural grip.**

LAG PART #	JOGGER SIZE
JB571119	3" X 8"
JB571111	3" X 10"
JB571123	4" X 10"
JB571126	4" X 12"
JB571143	5" X 12"
JB571175	6" X 12"
JB571159	6" X 16"
JB571176	6" X 18"

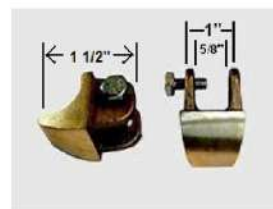
### CUSTOM SIZES AVAILABLE UPON REQUEST

#### MAGNETIC CLAMP PADS



**PART #MK551101**

#### BOOK CLAMPS



**PART #MK151132**



## AEROSOL SPRAYS



### LAG PART #AS091110 945 Silicone Spray

- Stops squealing, sticking, and binding of machinery
- Dries rapidly; leaves no greasy or oily film
- Retards corrosion; makes cleaning easier and quicker
- Protects and preserves equipment
- Saves time and labor
- Long lasting residual performance



### LAG PART #3M371101 3M Super 77 Adhesive Spray

- Convenient, fast spray adhesive
- Strong, durable bond
- Dries quickly and clear
- Bonds foils, plastics, papers, metals and cardboard
- Immediate holding strength
- Meets California Air Resources Board (CARB) VOC requirements



### LAG PART #AS091113 955 Anti-Static Spray

- Counteracts static electricity charges that attract dust; prevent materials from feeding properly or "shock" equipment operators
- Helps prevent data loss and damage to a computer's memory
- Can be used on metal rollers, drive belts; scanners, electronic image processors

### LAG PART #AS091114 #30 Silicone Release



The W-R Silicone Release #30 is a new silicone blend formulated to prevent the sticking and build-up of waxes, paper dust, clay, and offset spray powder on the cutting dies, cutting cylinders, counter plates, and cutting table.

The W-R Silicone Release #30 works great on molds to prevent sticking and provides an improved release. This product can also be used on back cylinders to help prevent markings.

#### Product Advantages:

Designed for use on all metal surfaces

Great for guillotine cutting tables and knives

10x more silicone concentration than most aerosol silicone sprays

Cleans and protects equipment surfaces

Contains no water. It will not promote rust

Simple trigger spray application

Spray on the surface and wipe clean

Self-cleaning. Each new application removes the prior application



### LAG PART #AS091104 050 Glass Cleaner

- The World's Best Glass Cleaner
- Dissolves dirt, grease, grit, and grime
- Guaranteed to leave no film
- Ammonia-free
- Streakless shine



### LAG PART #AS091126 587 Adhesive Spray

- Multi-Surface Bonding
- High Shear Strength
- Fast, Aggressive Tack
- A high performance mist adhesive used for temporary and permanent bonding
- Non-staining formula makes it suitable for many applications